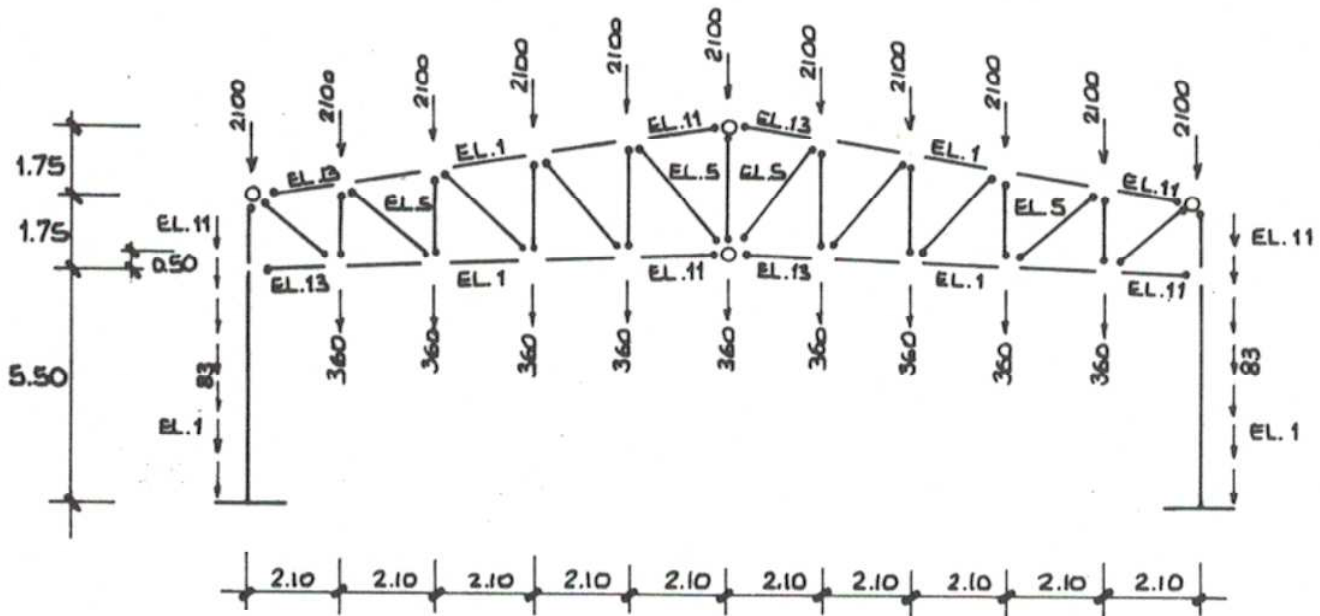
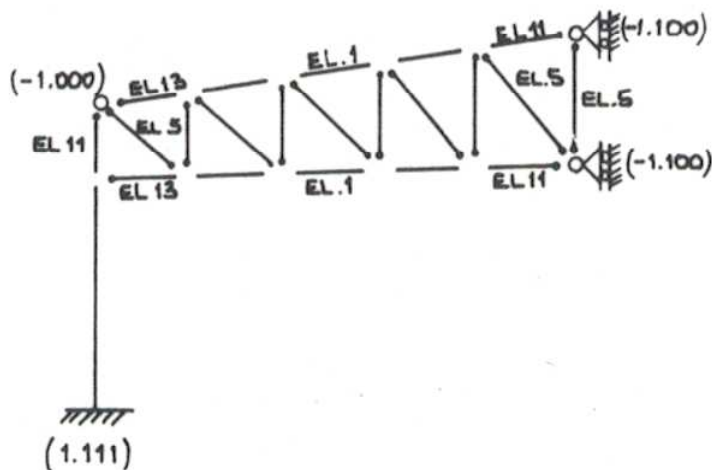


**ESEMPIO 1a**  
**PORTALE RETICOLARE: MODELLO A NODI PARZIALMENTE SOLIDALI**

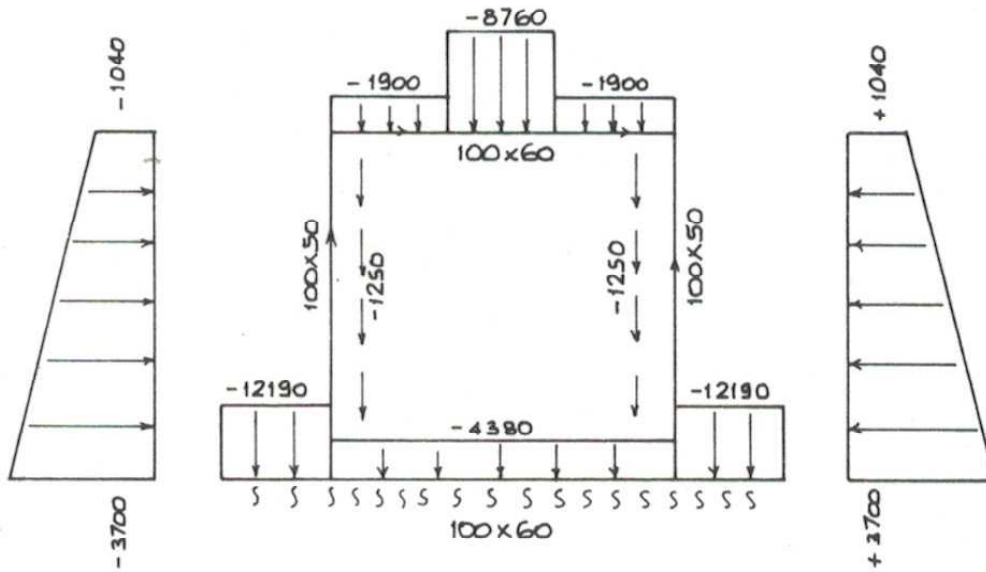


COLONNE HEB 240 (x-x)  
 CORRENTE SUP. 2 x UPN 140  
 CORRENTE INF. 2 x L 80 x 8  
 DIAGONALI 2 x L 80 x 8  
 MONTANTI 2 x L 100 x 10

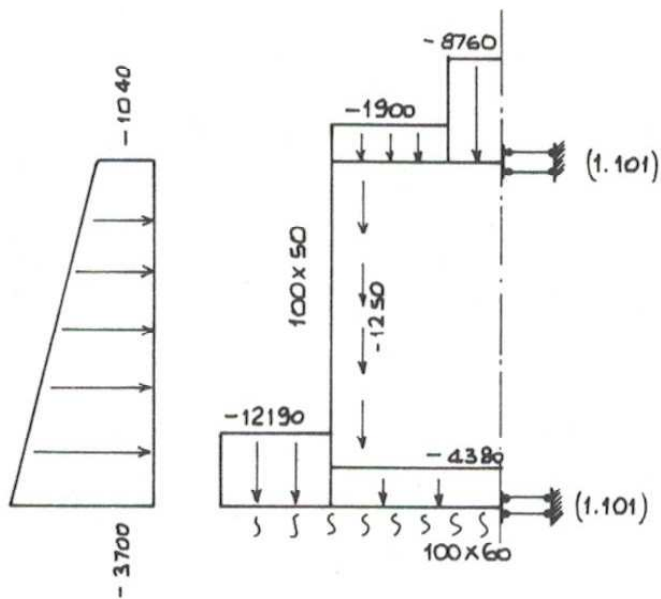
**ESEMPIO 1b**  
**PORTALE RETICOLARE: IPOTESI DI SIMMETRIA STRUTTURALE**



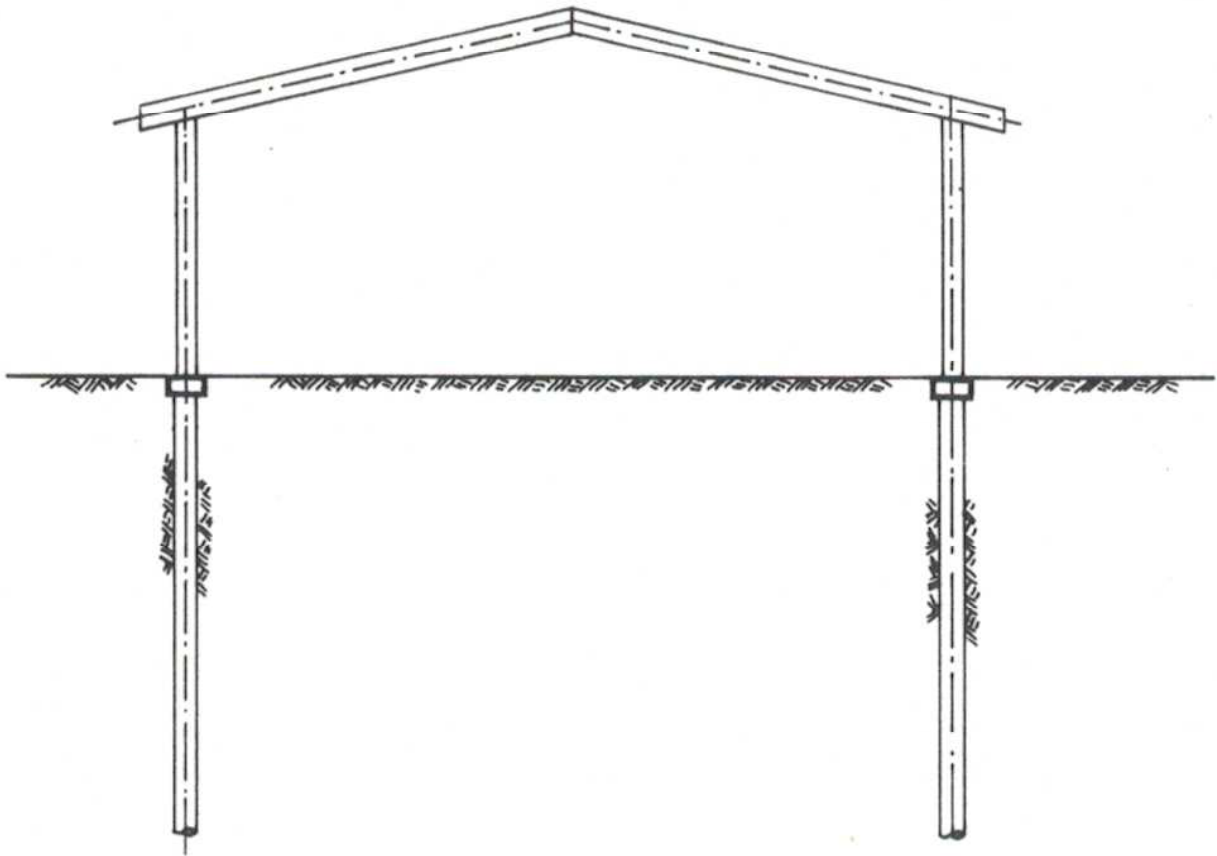
**ESEMPIO 2a**  
**TOMBINO SCATOLARE**



**ESEMPIO 2b**  
**IPOTESI DI SIMMETRIA STRUTTURALE**

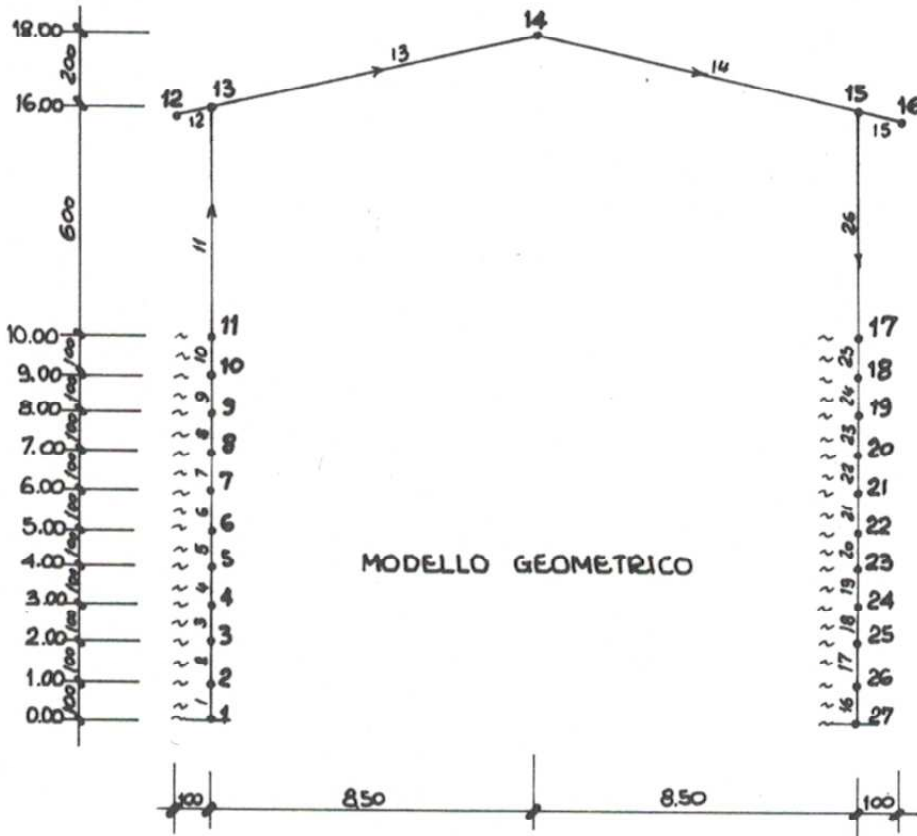


SEZIONE SCHEMATICA

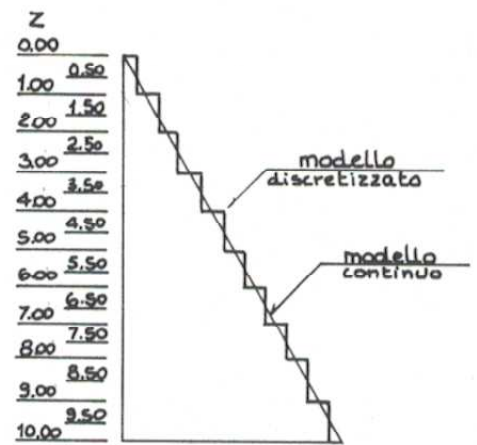


ESEMPIO 3

## PORTALE IN ACCIAIO SU PALI $\phi$ 500 IN CLS



### MODELLAZIONE DEL TERRENO

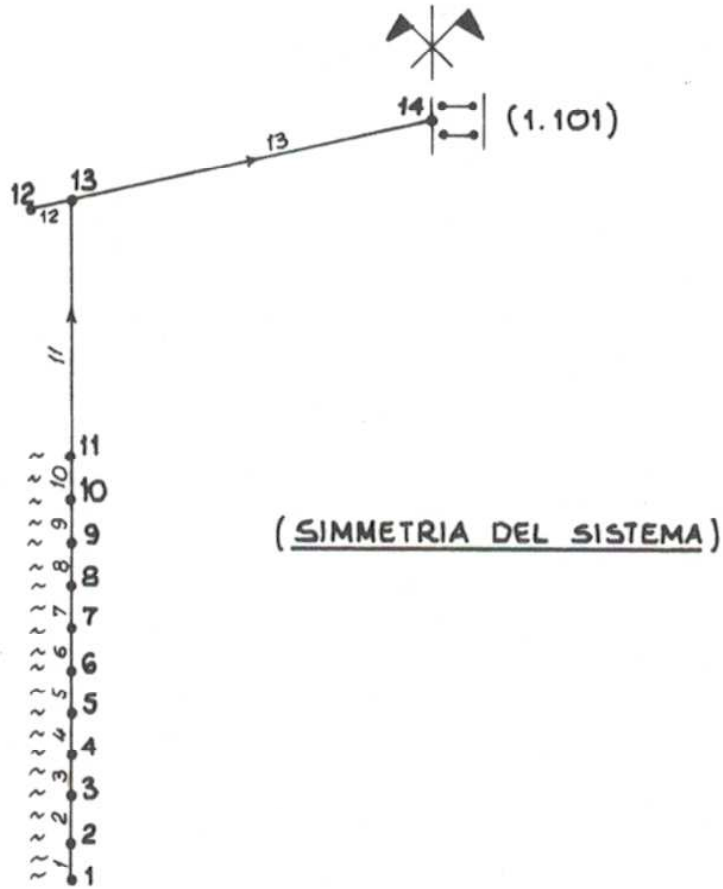


RELAZIONE  $k_h = n_h \frac{z}{D}$

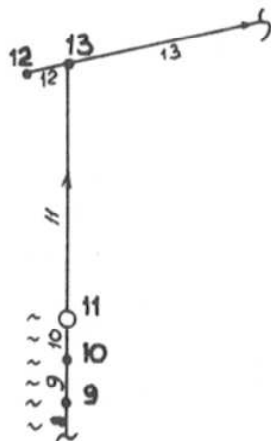
			I	A	$F_t$
TRAVI	IPE	500	48200	116	2.275
COLONNE	HEB	300	25166	149	4.515
PALI	$\phi$ 500		306'796.16	1963.50	1.185
			[cm <sup>4</sup> ]	[cm <sup>2</sup> ]	

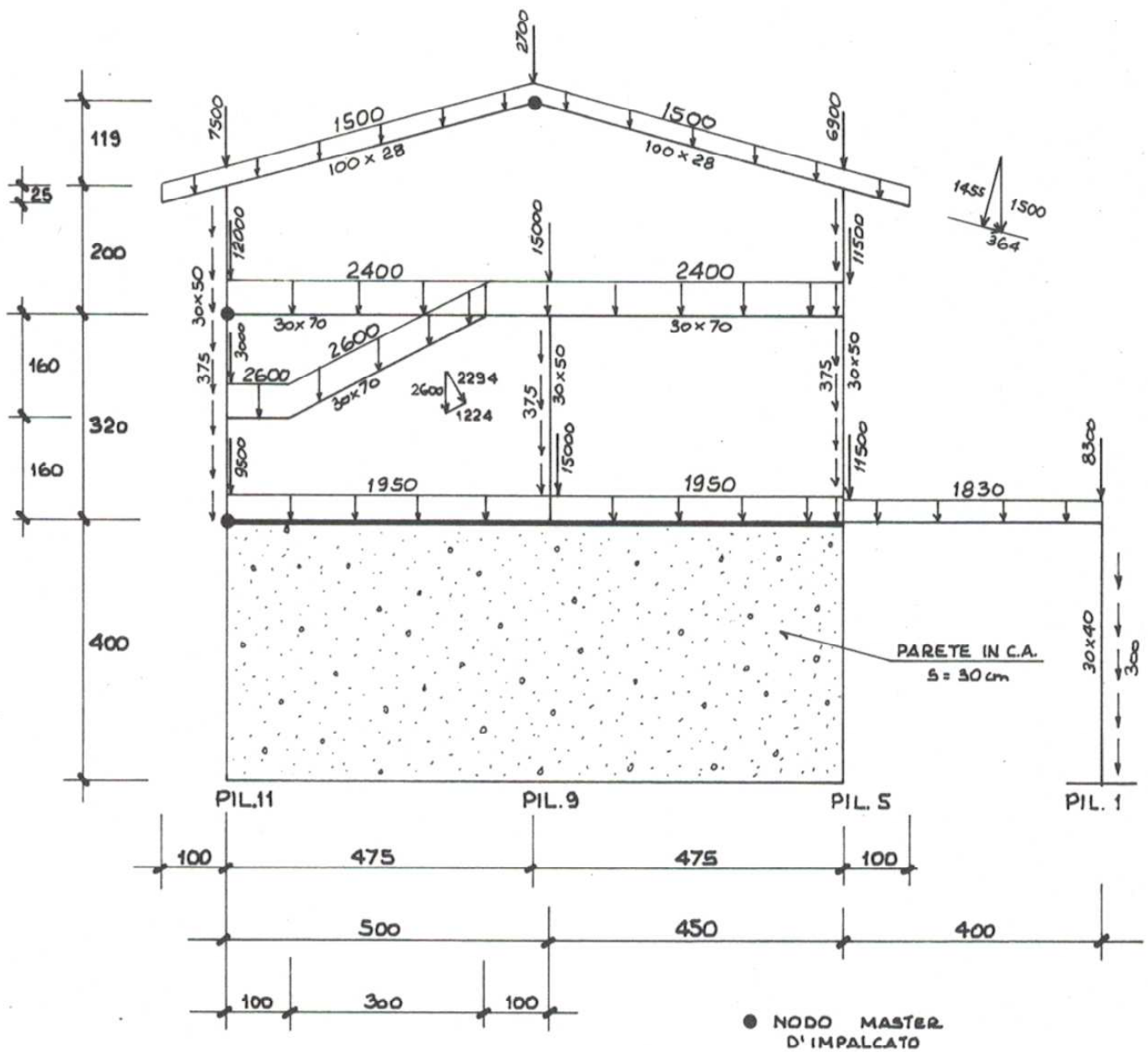
**ESEMPIO 3a**

### ESEMPIO 3b

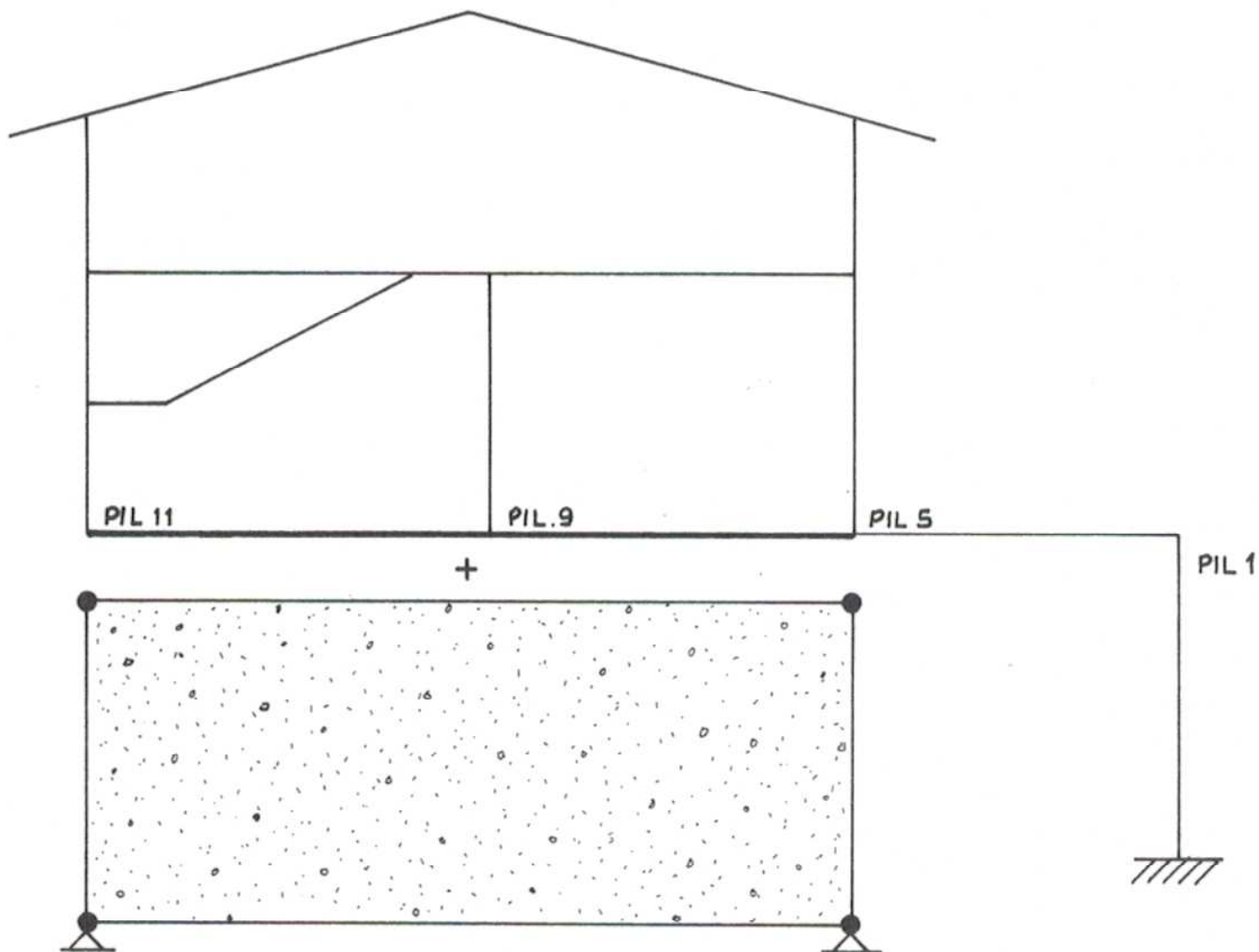


### ESEMPIO 3c





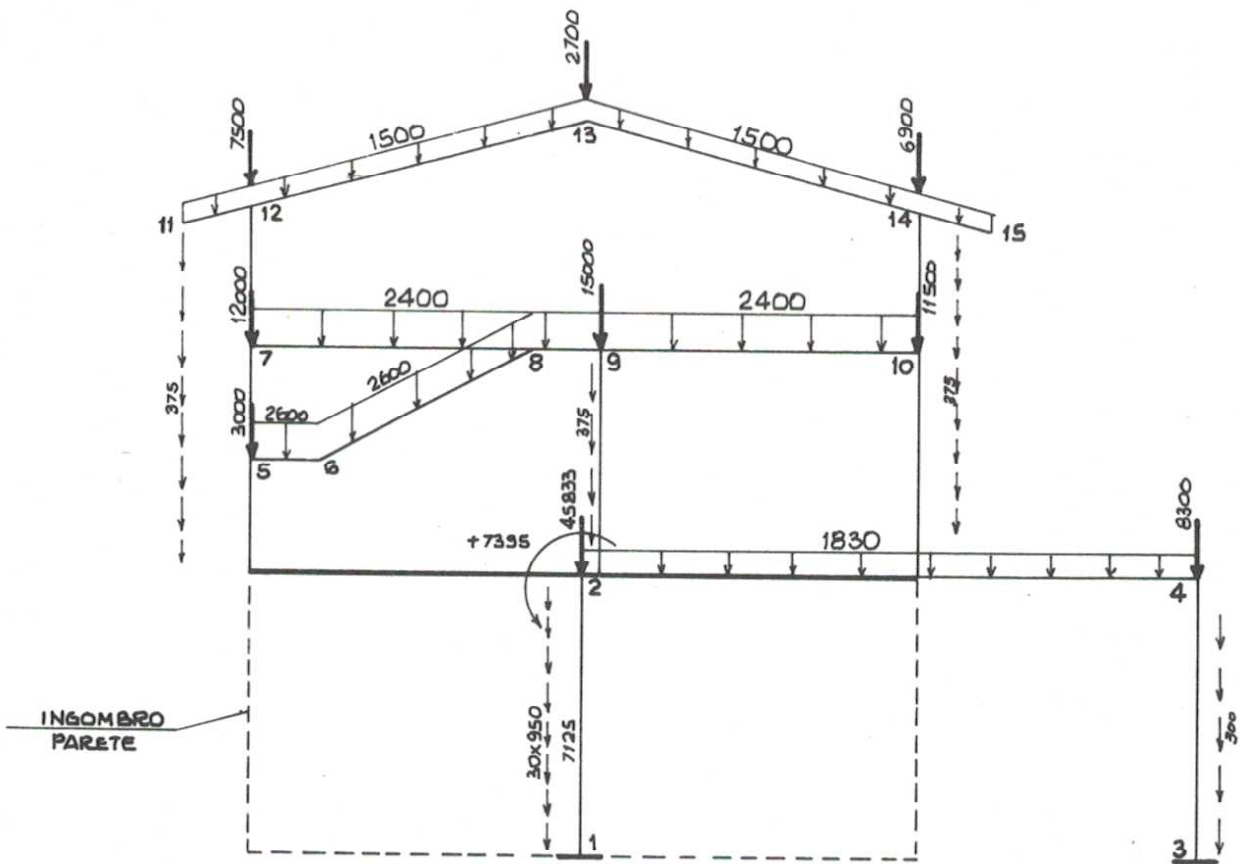
**ESEMPIO 4a**  
**TELAIO SU PARETE**  
**MODELLAZIONE A "PANNELLO"**



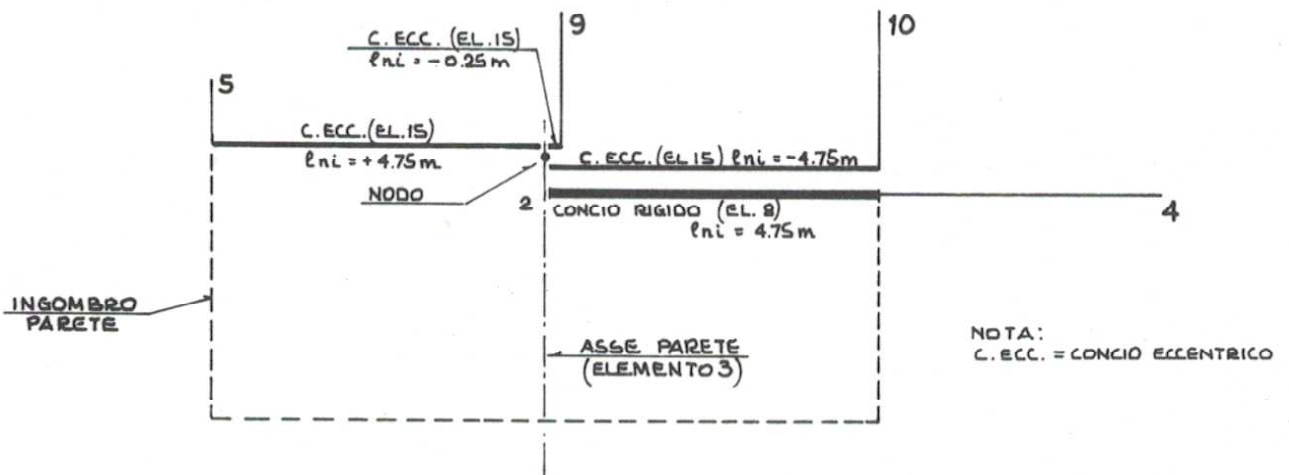
ESEMPIO 4a

SCHEMA ASSEMBLAGGIO DEL PANNELLO AL TELAIO

**ESEMPIO 4b**  
**TELAIO SU PARETE**  
**MODELLAZIONE A "CONCI ECCENTRICI"**



**PARTICOLARE INNESTO CONCI RIGIDI ED ECCENTRICI RISPETTO ALL'ASSE PARETE**



**RISULTANTE SUL NODO 2 DEI CARICHI AGENTI SUI CONCI ECCENTRICI**

